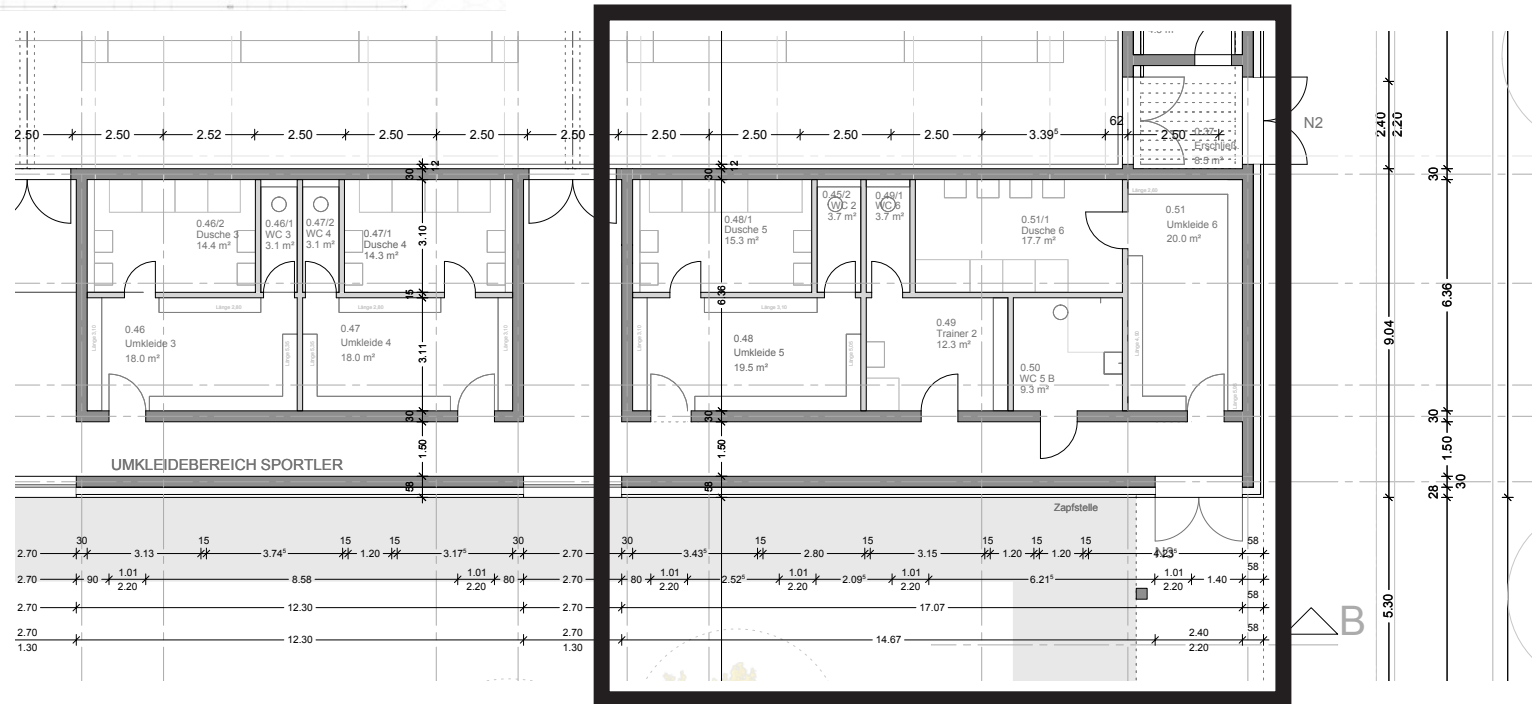
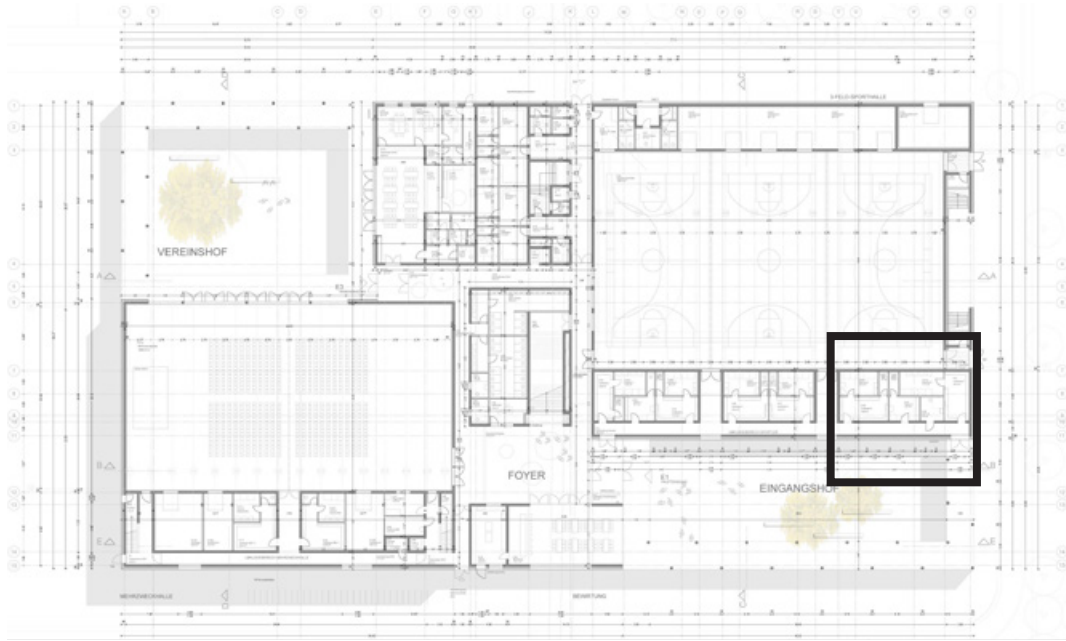
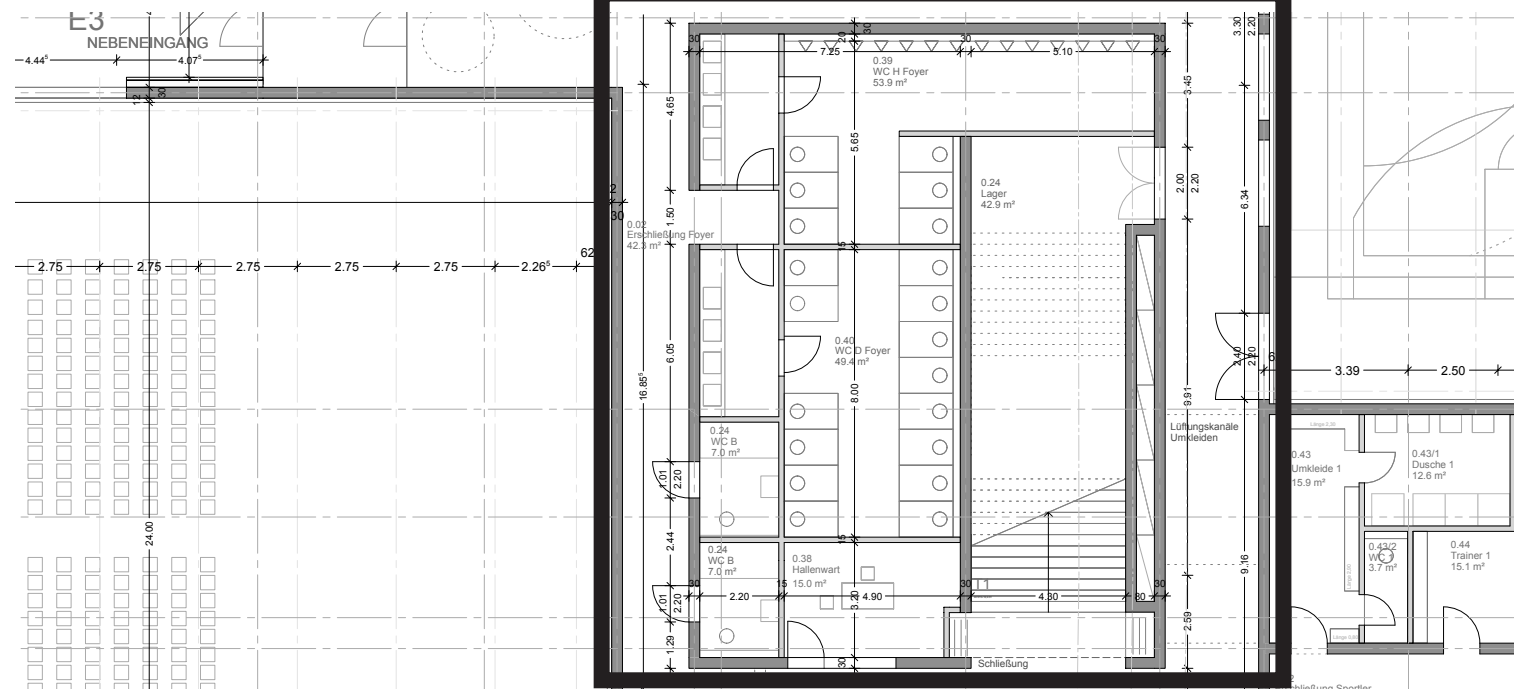
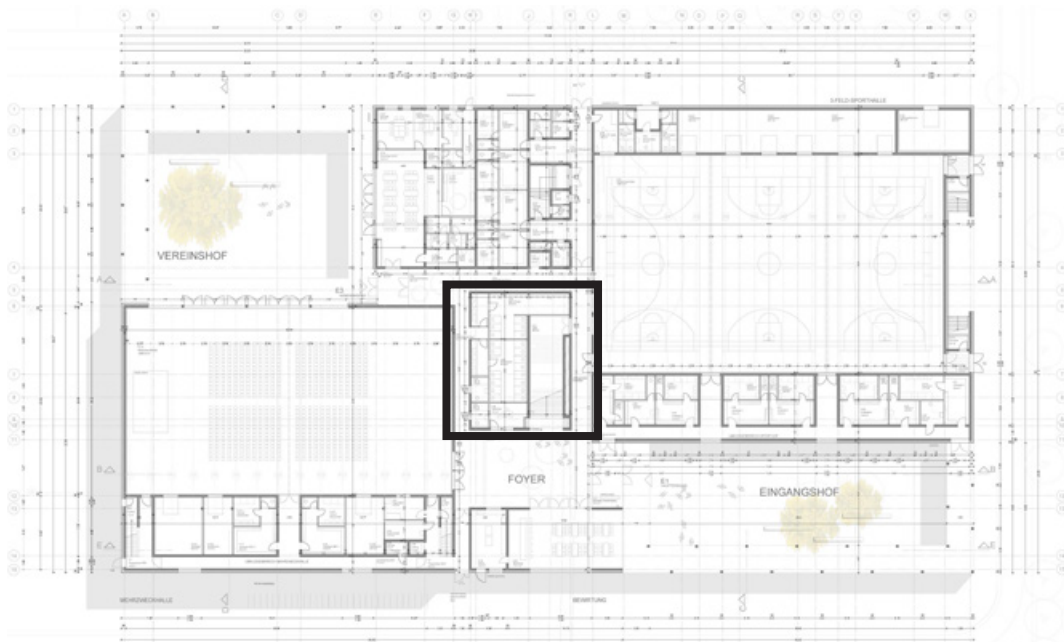
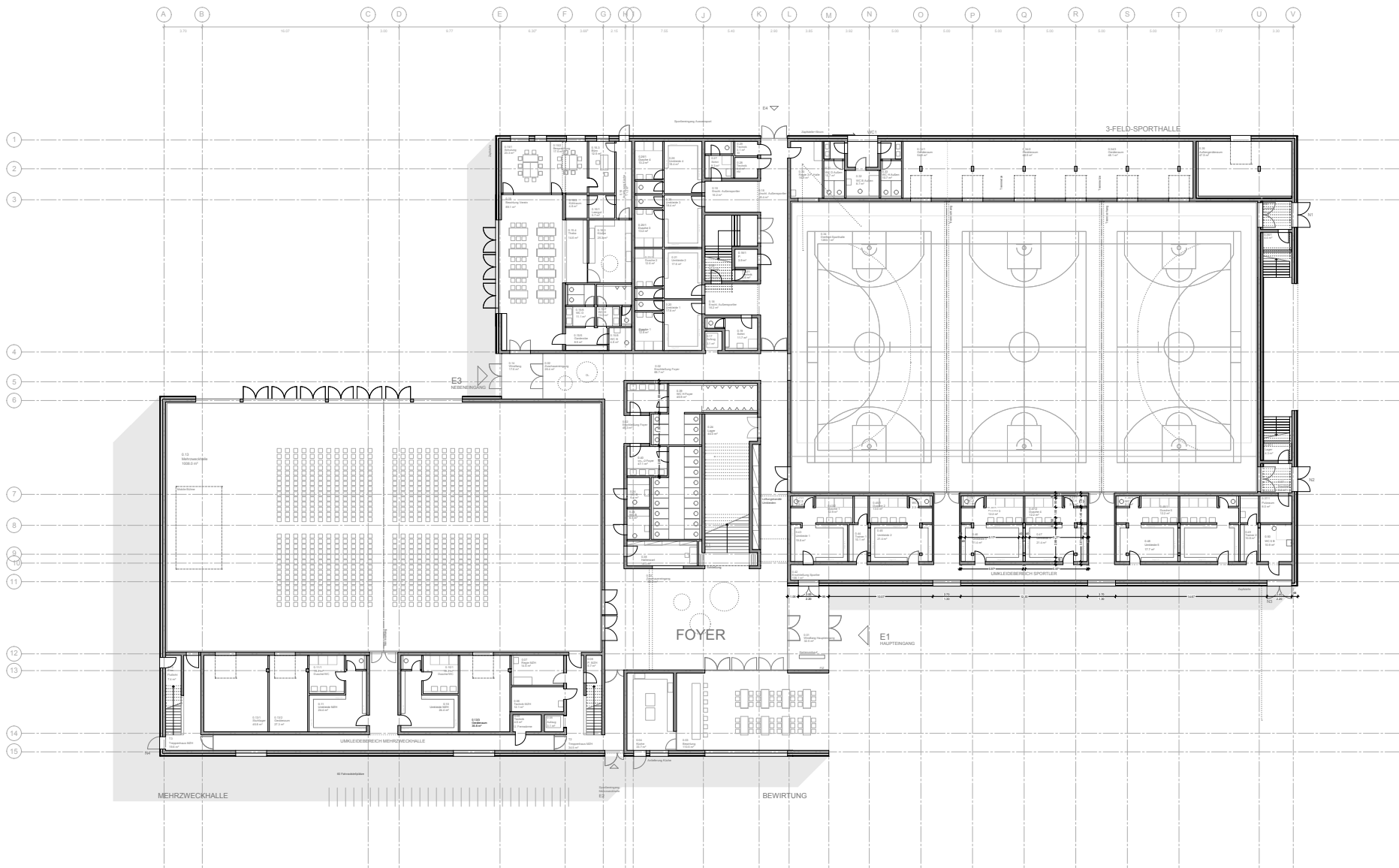


Q1 Verzicht auf öffentl. WCs im Bürgerpark
Planungsstand: 08.07.2015

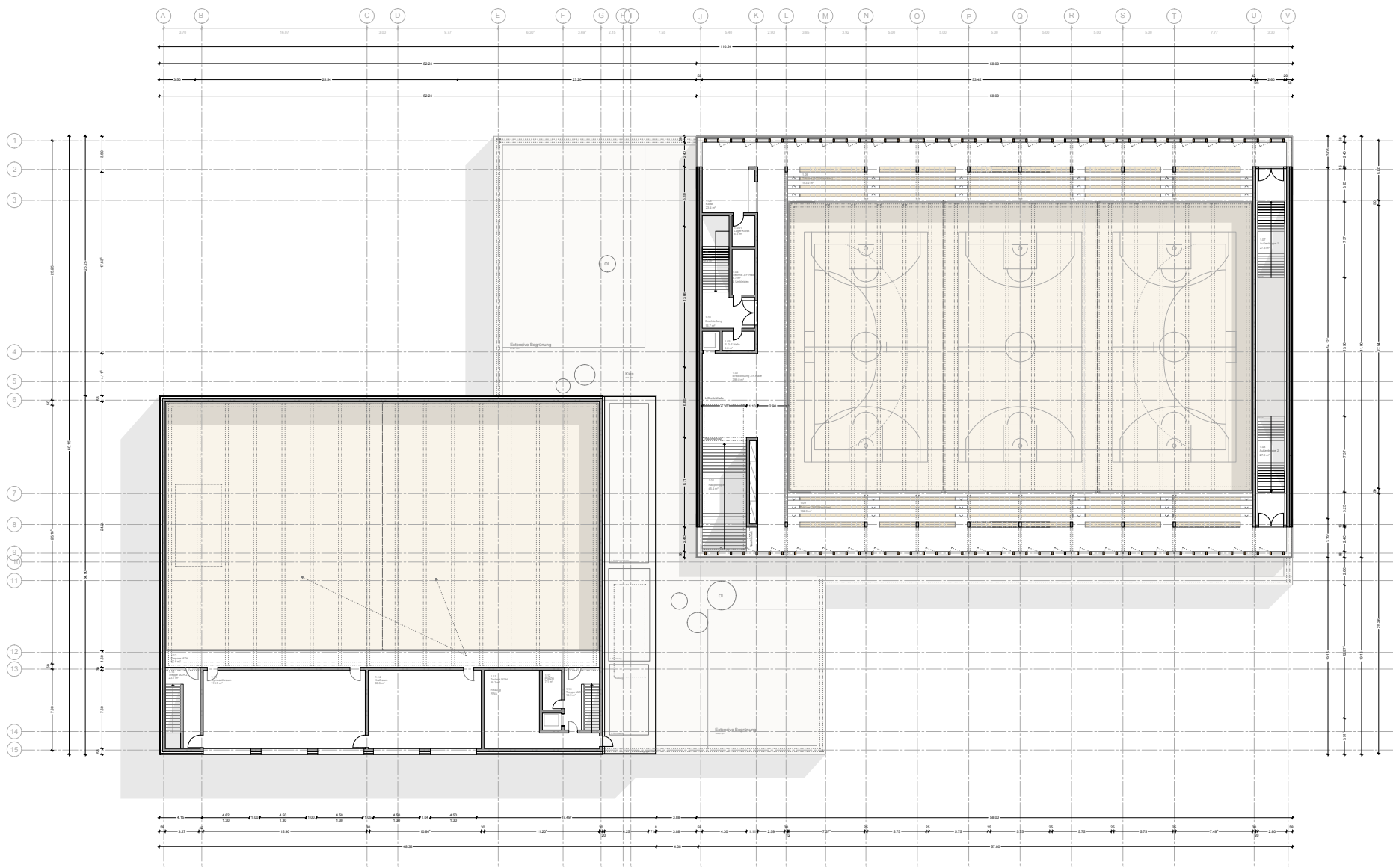




Q3 Verzicht auf Sanitäranlagen (Veranstaltungsnutzung)
 Planungsstand: 08.07.2015

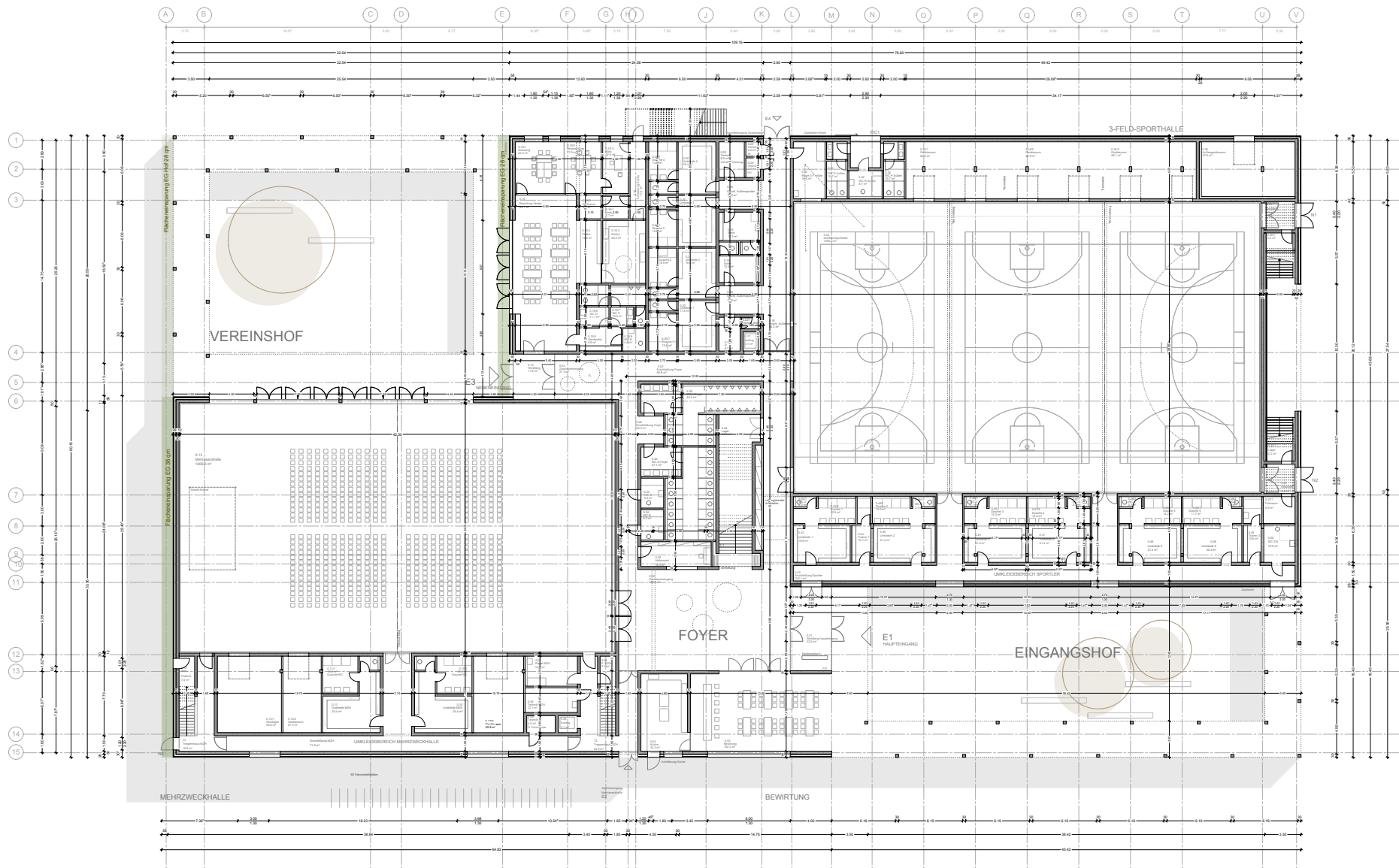


Grundriss EG

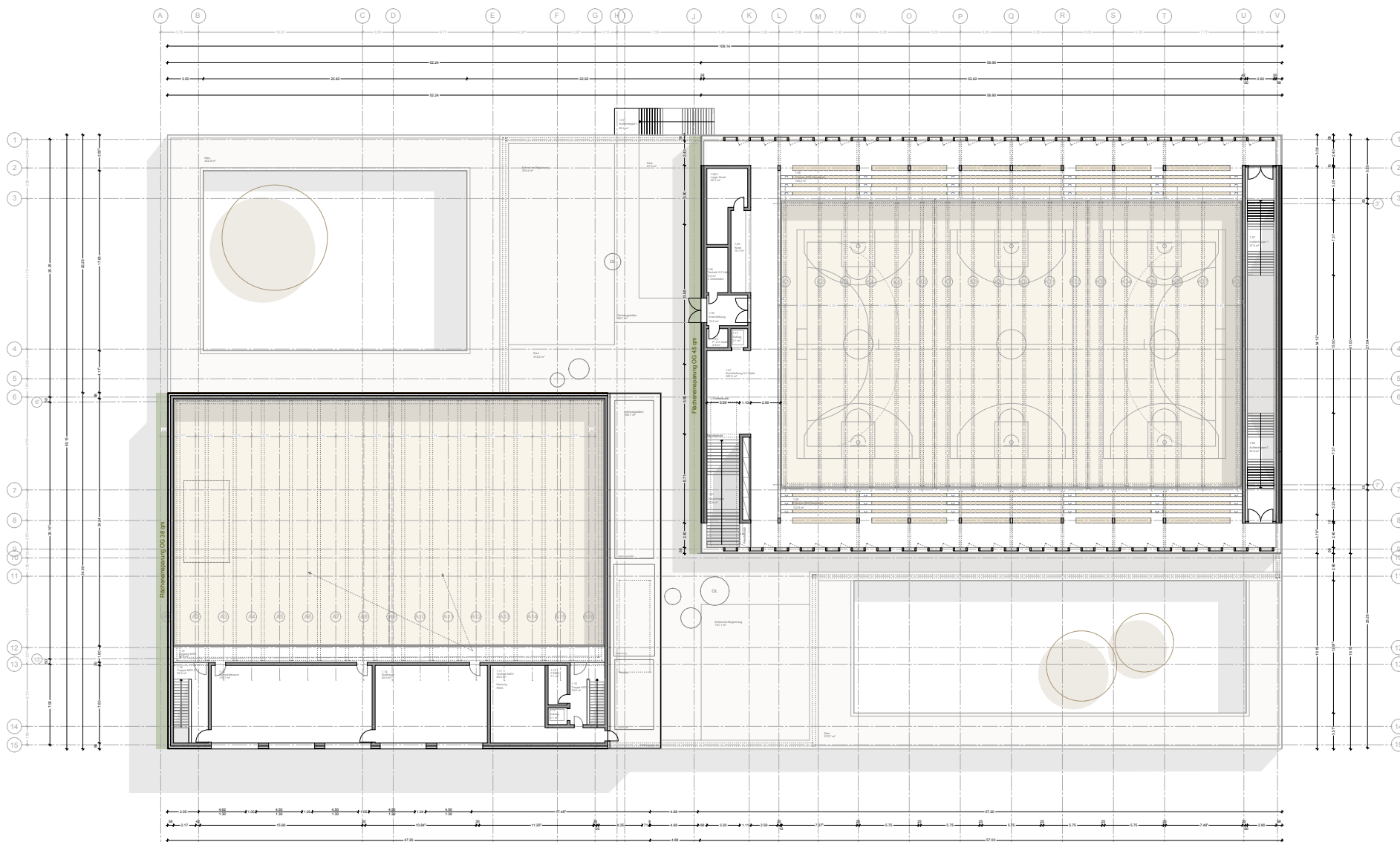


Grundriss OG

Q4 Verzicht auf Pergolen (Eingangs- und Vereinshof)
 Planungsstand: 19.08.2015

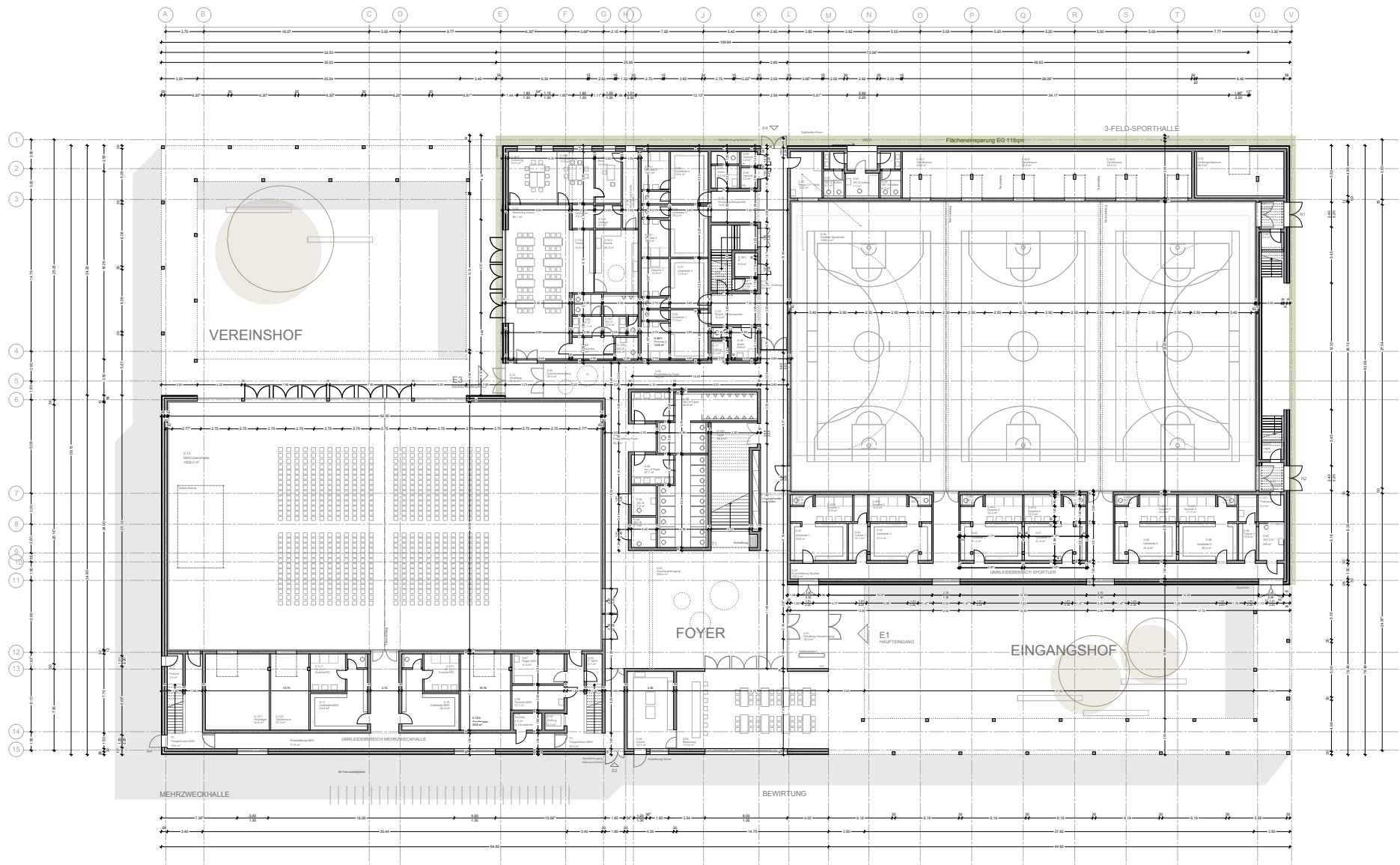


Grundriss EG

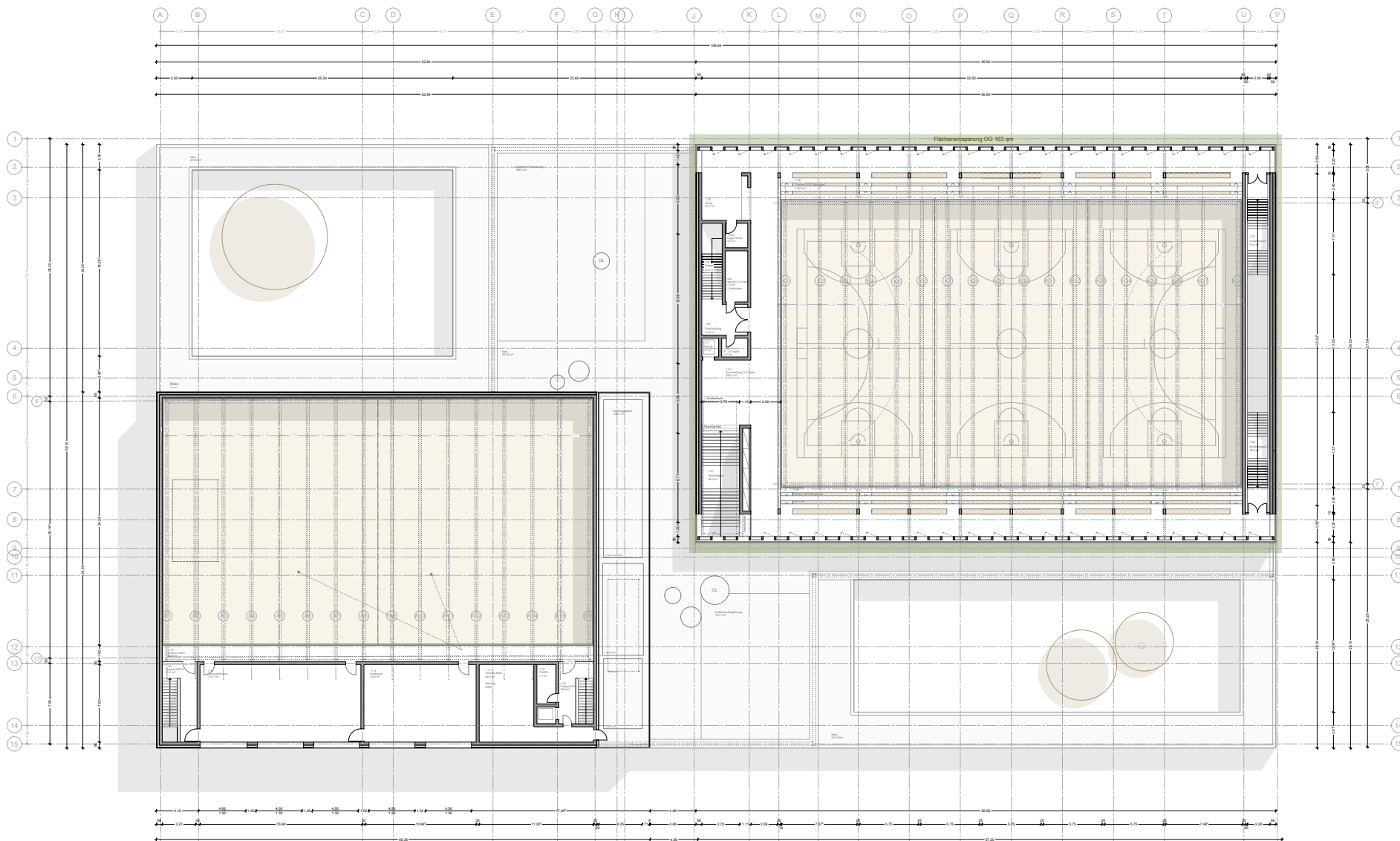


Grundriss OG

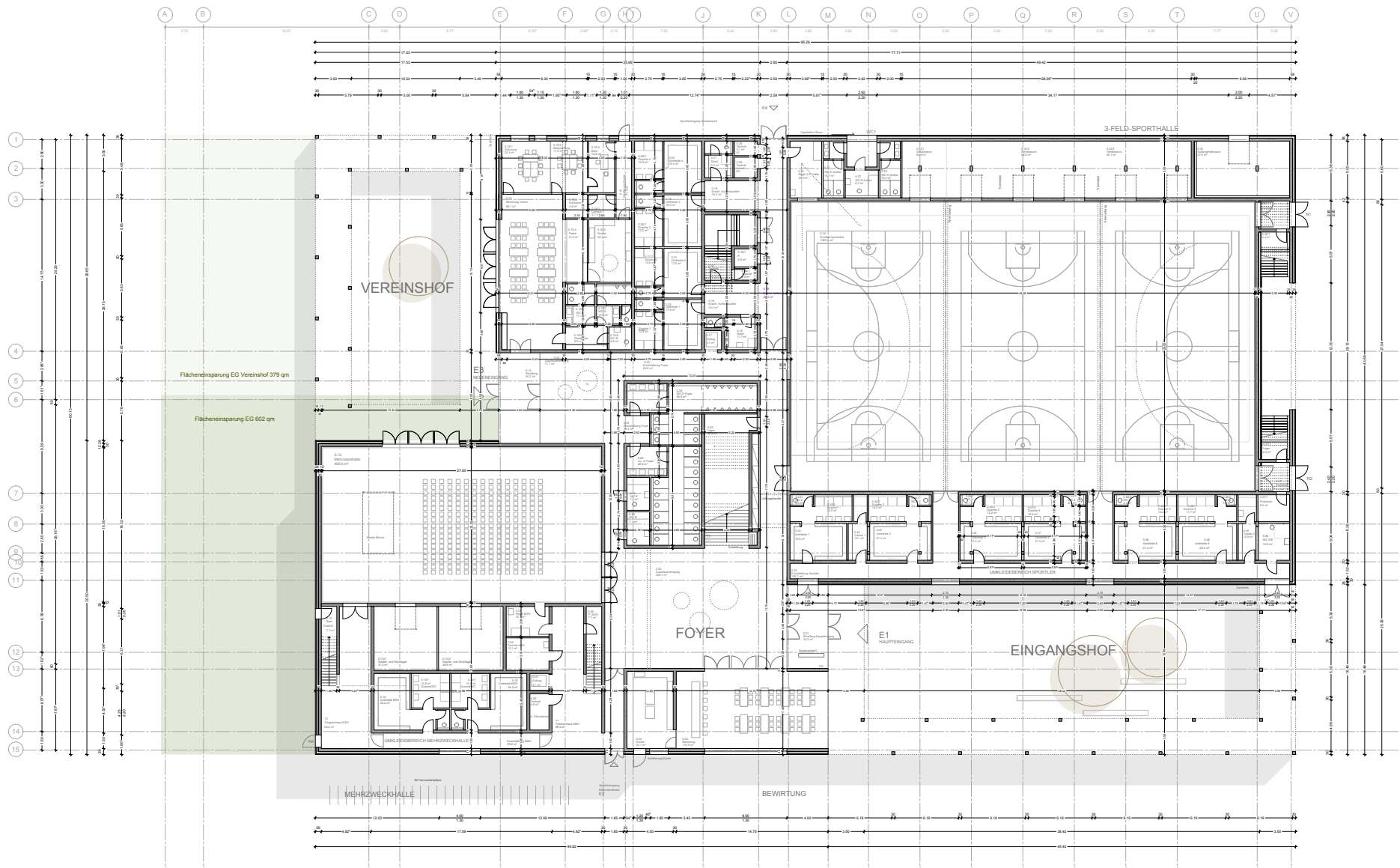
F1 Außenliegende Fluchttreppe
Planungsstand: 19.08.2015



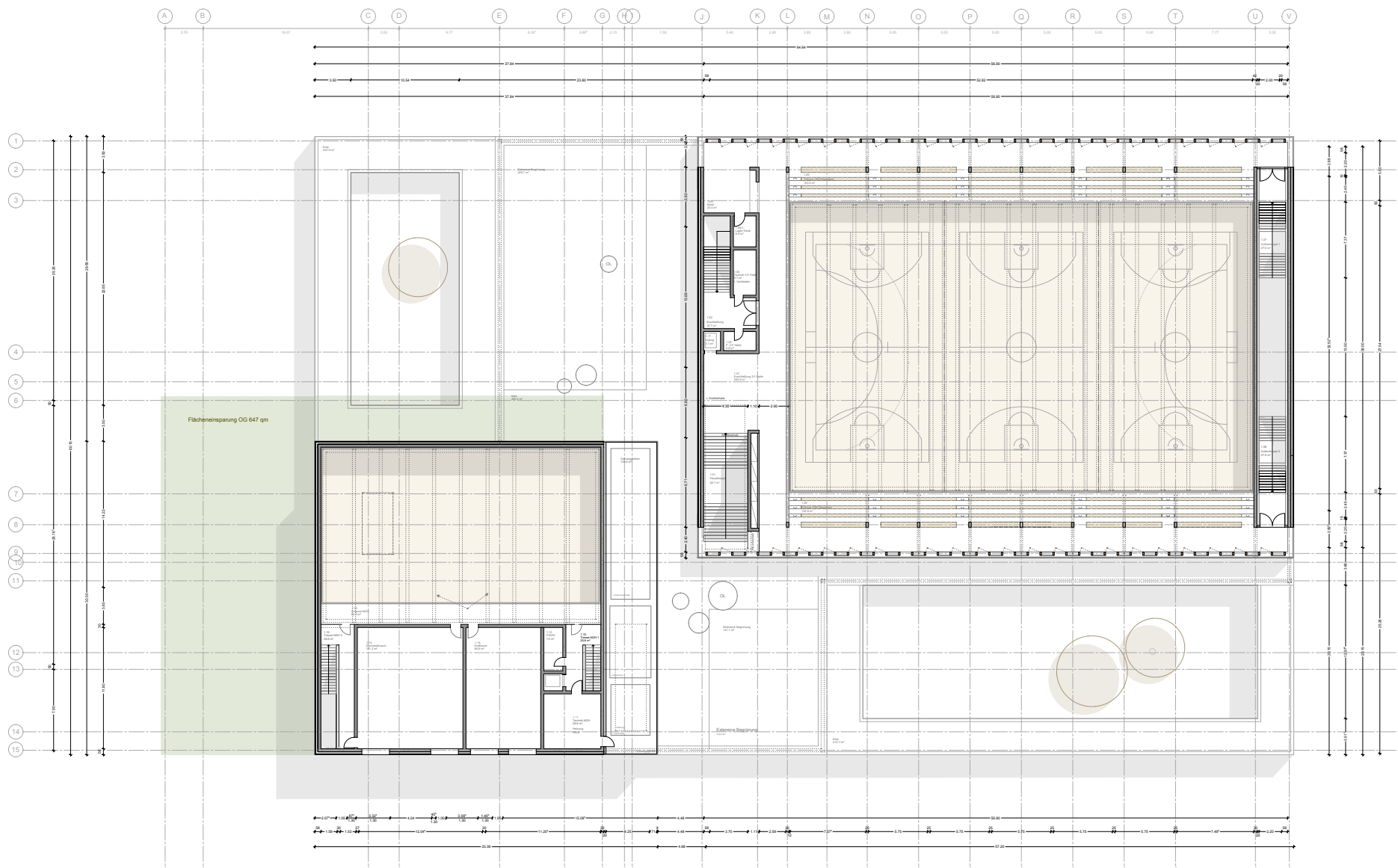
Grundriss EG



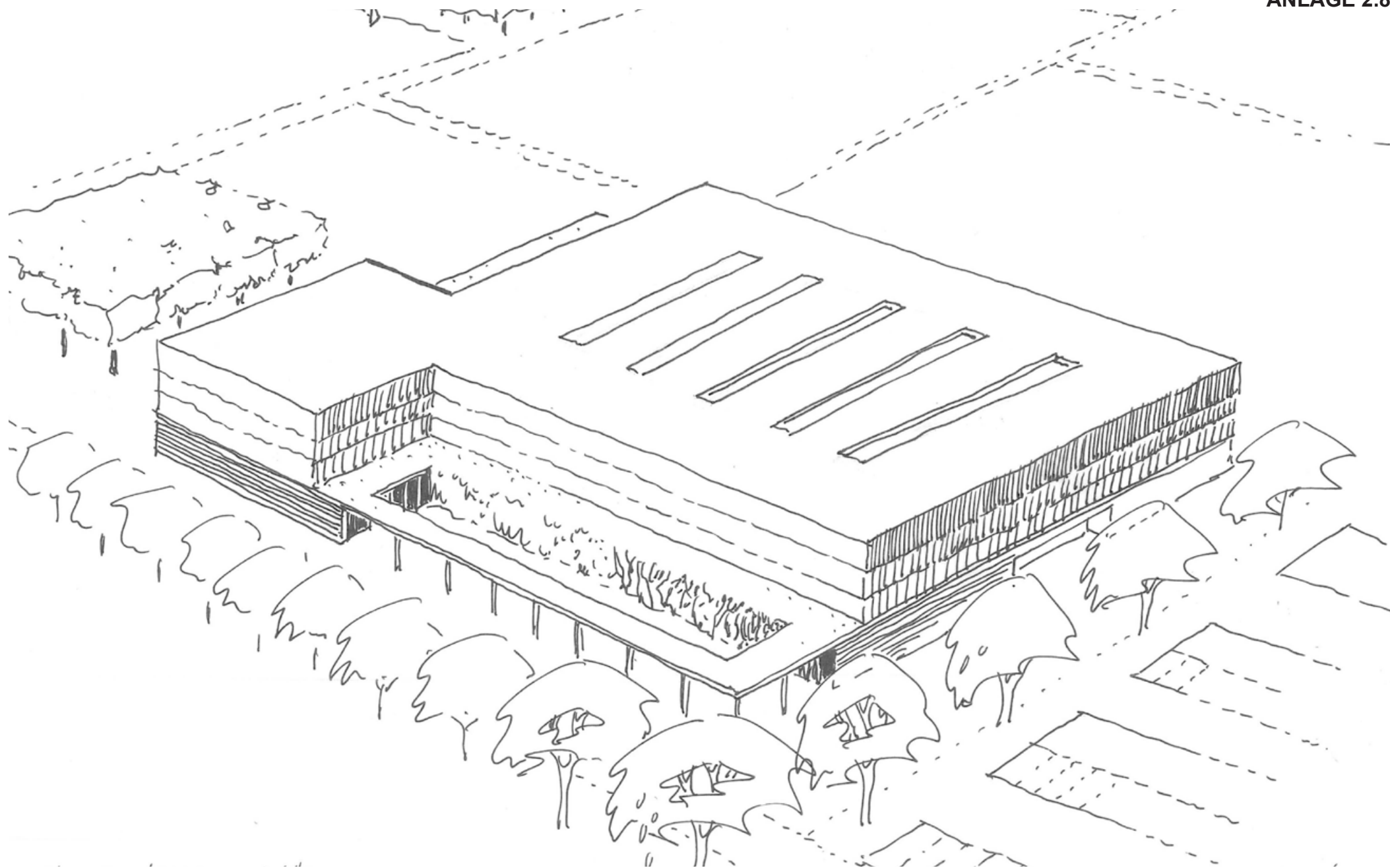
Grundriss OG

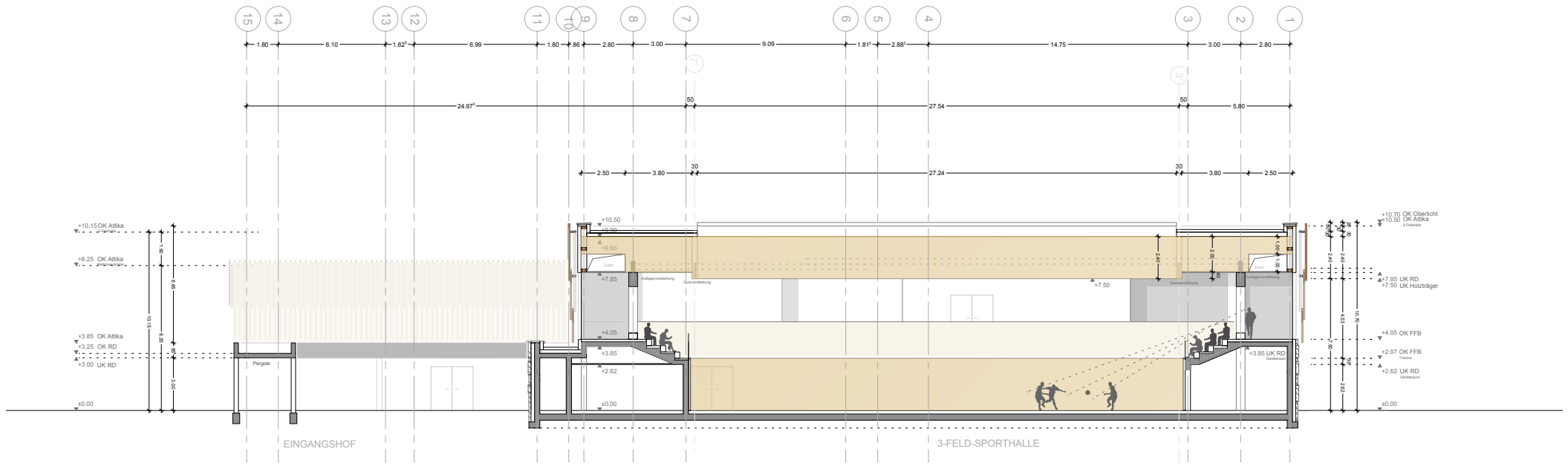


Grundriss EG

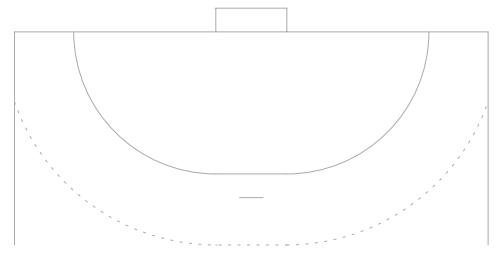


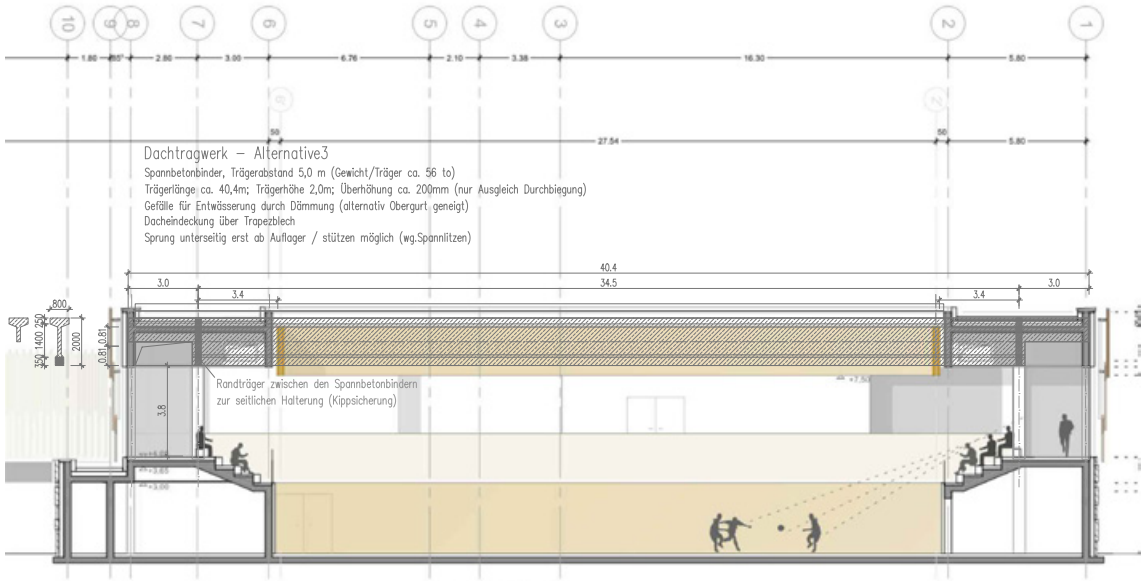
Grundriss OG



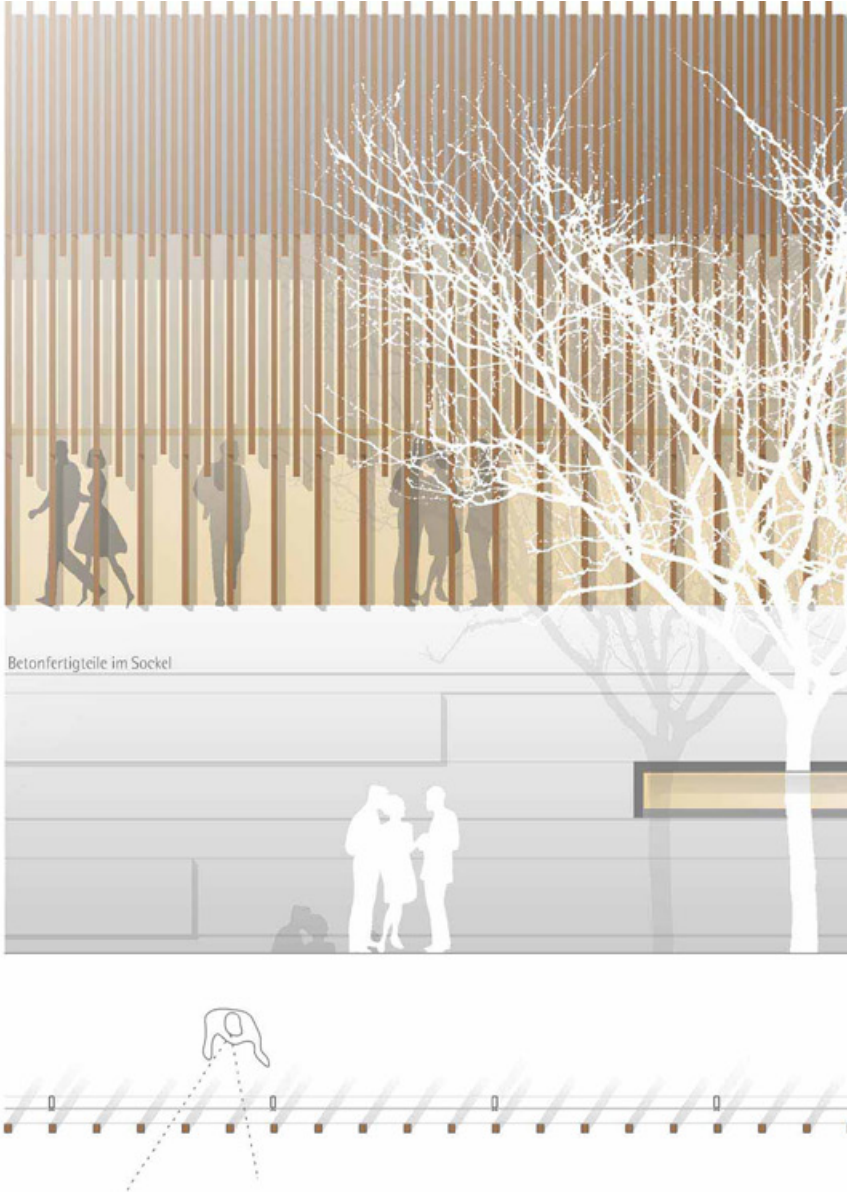
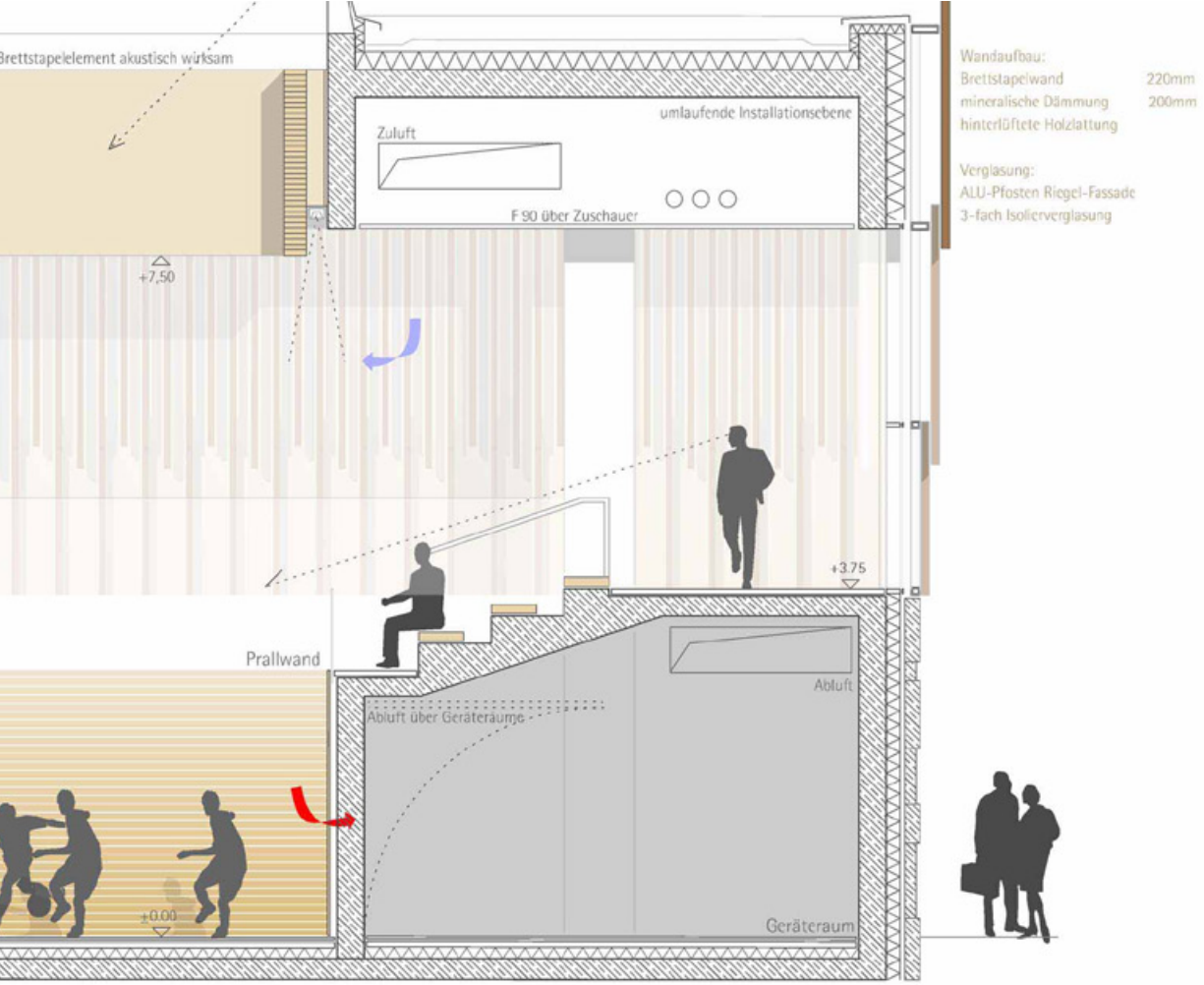


SCHNITT C-C





B2 Hallentragwerk mit durchlaufenden Spannbetonbindern
Planungsstand: 19.08.2015



v.l.n.r.: Schnitt / Ansicht / Grundriss

B3 Verzicht auf Holzfassade in Obergeschoss | **B4** Verzicht auf Betonelemente in Sockelbereich
Stand Wettbewerb