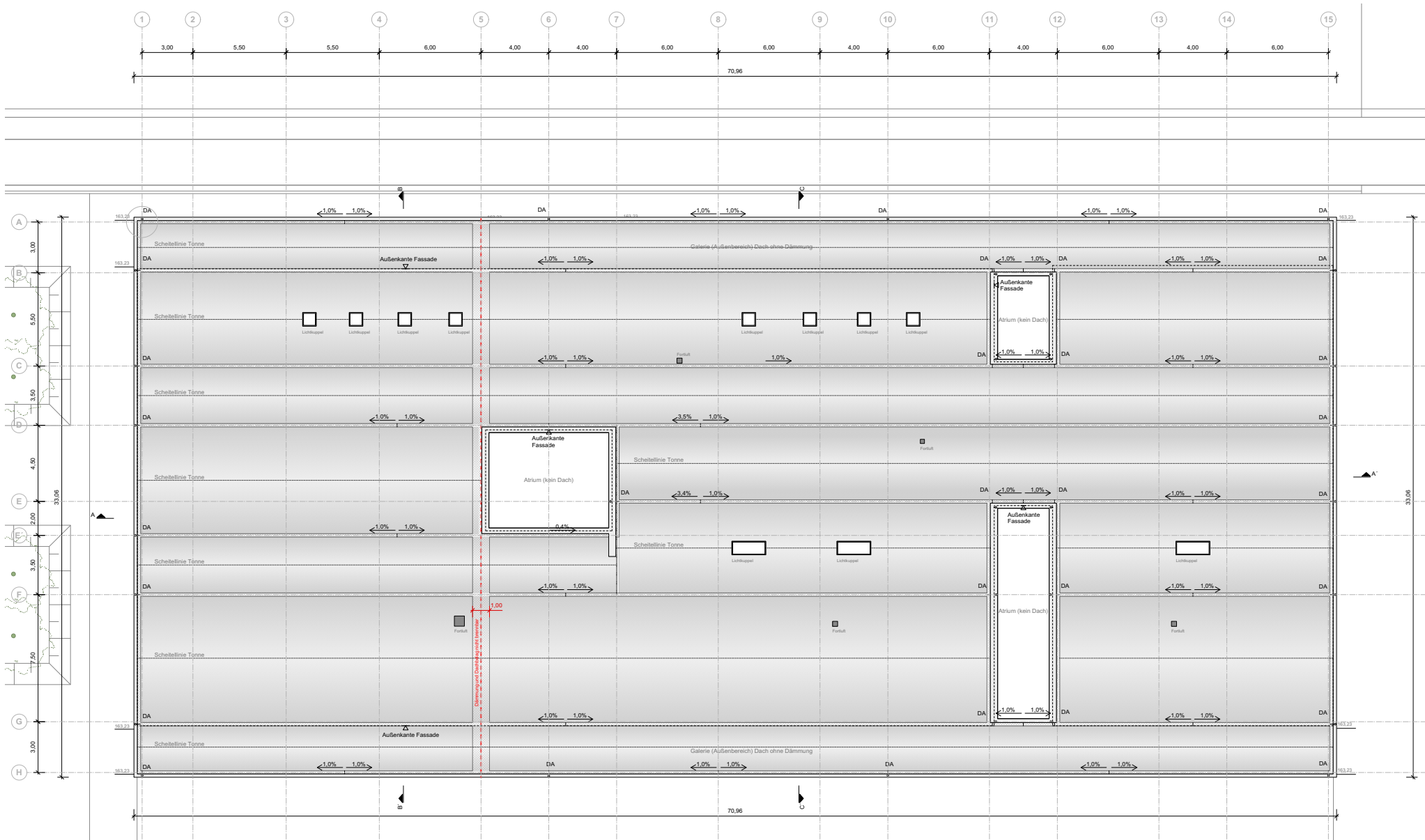
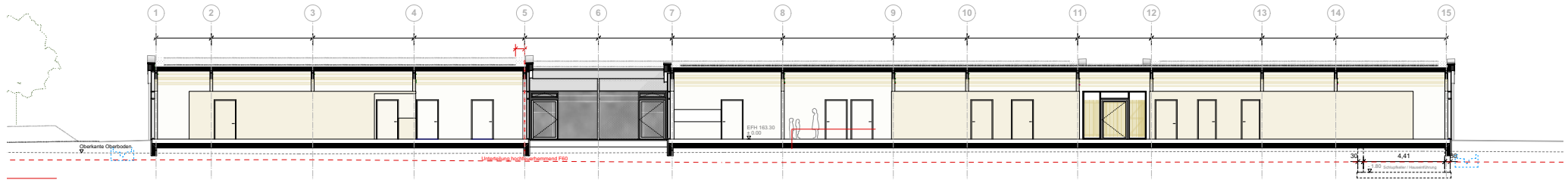


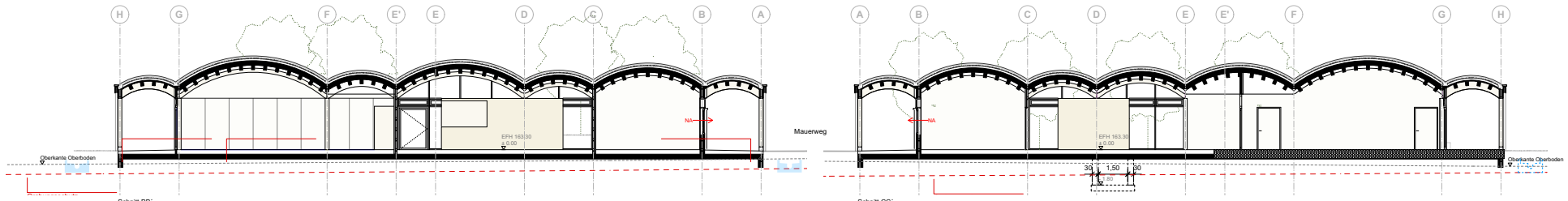
Anlage 2.1 Grundriss Erdgeschoss



Anlage 2.2 Dachaufsicht

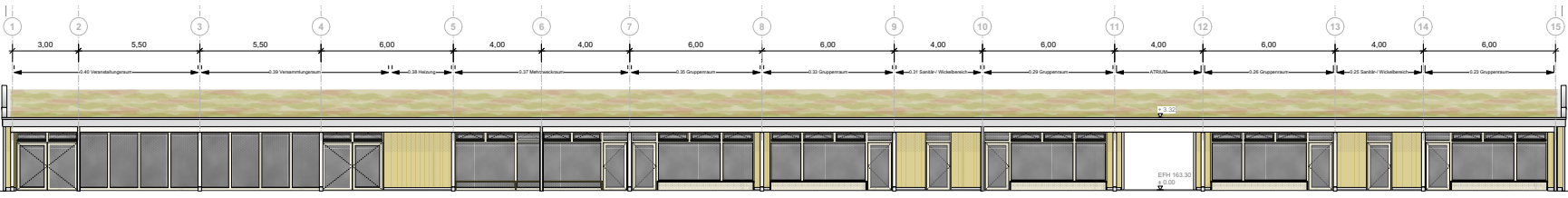


Schnitt AA'

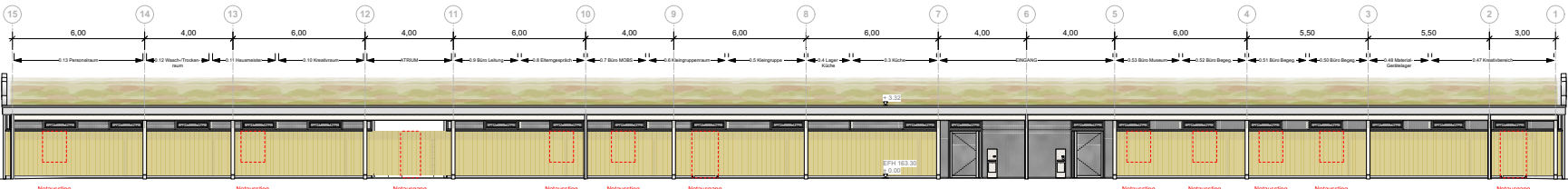


Schnitt BB'

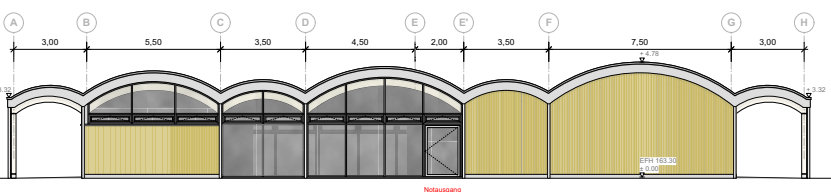
Schnitt CC'



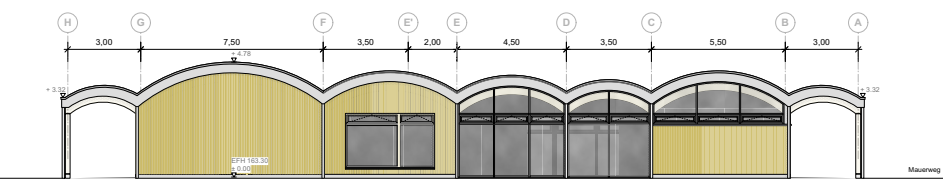
Ansicht von Süden



Ansicht von Norden



Ansicht von Westen



Ansicht von Osten

Anlage 2.3 Schnitte und Ansichten