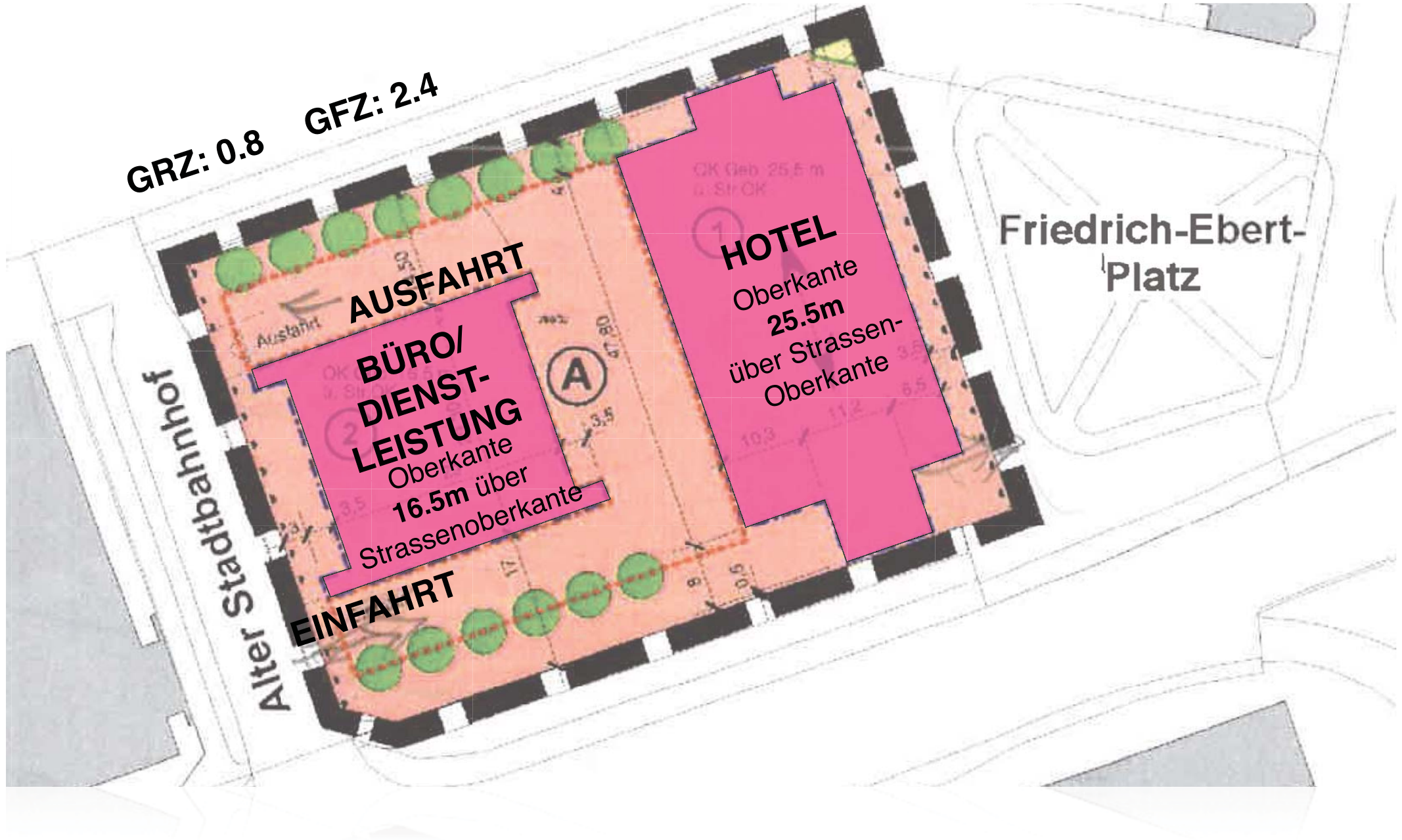


Hotel Friedrich-Ebert-Platz

Lahr/ Schwarzwald



Bebauungsplan Vorgaben



GRZ: 0.8 GFZ: 2.4

AUSFAHRT
**BÜRO/
DIENST-
LEISTUNG**
Oberkante
16.5m über
Strassenoberkante

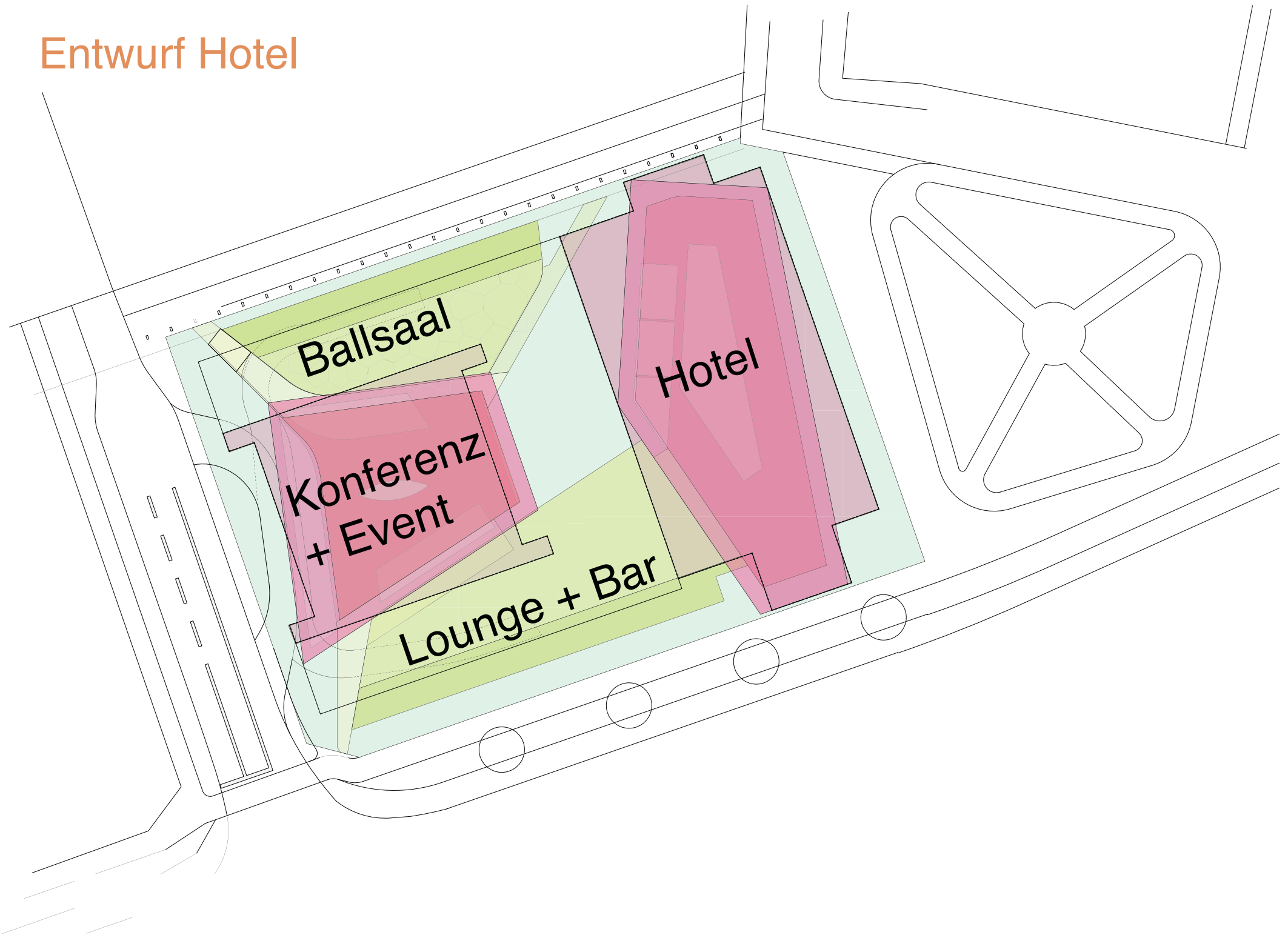
HOTEL
Oberkante
25.5m
über Strassen-
Oberkante

Friedrich-Ebert-
Platz

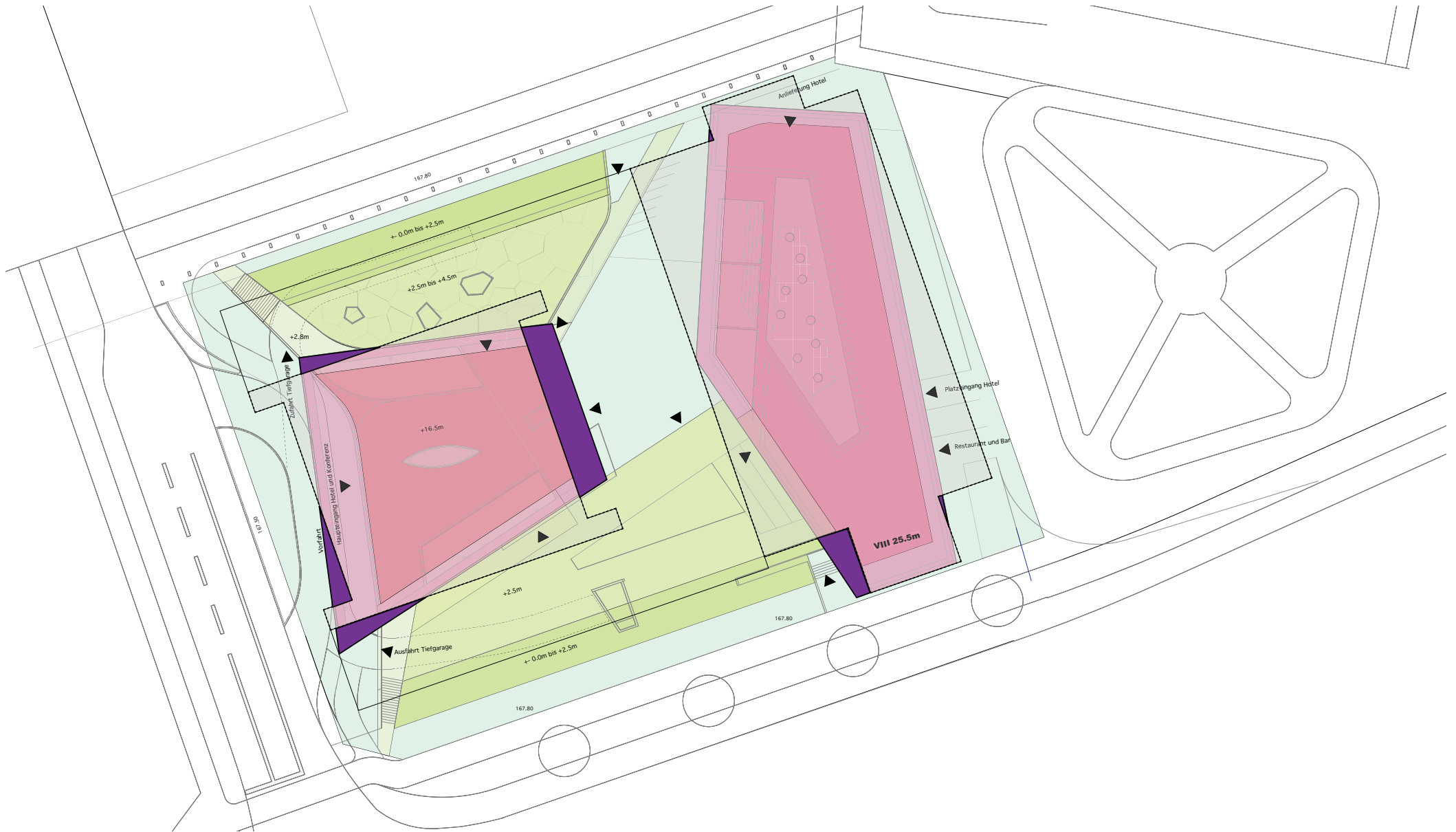
Alter Stadtbahnhof

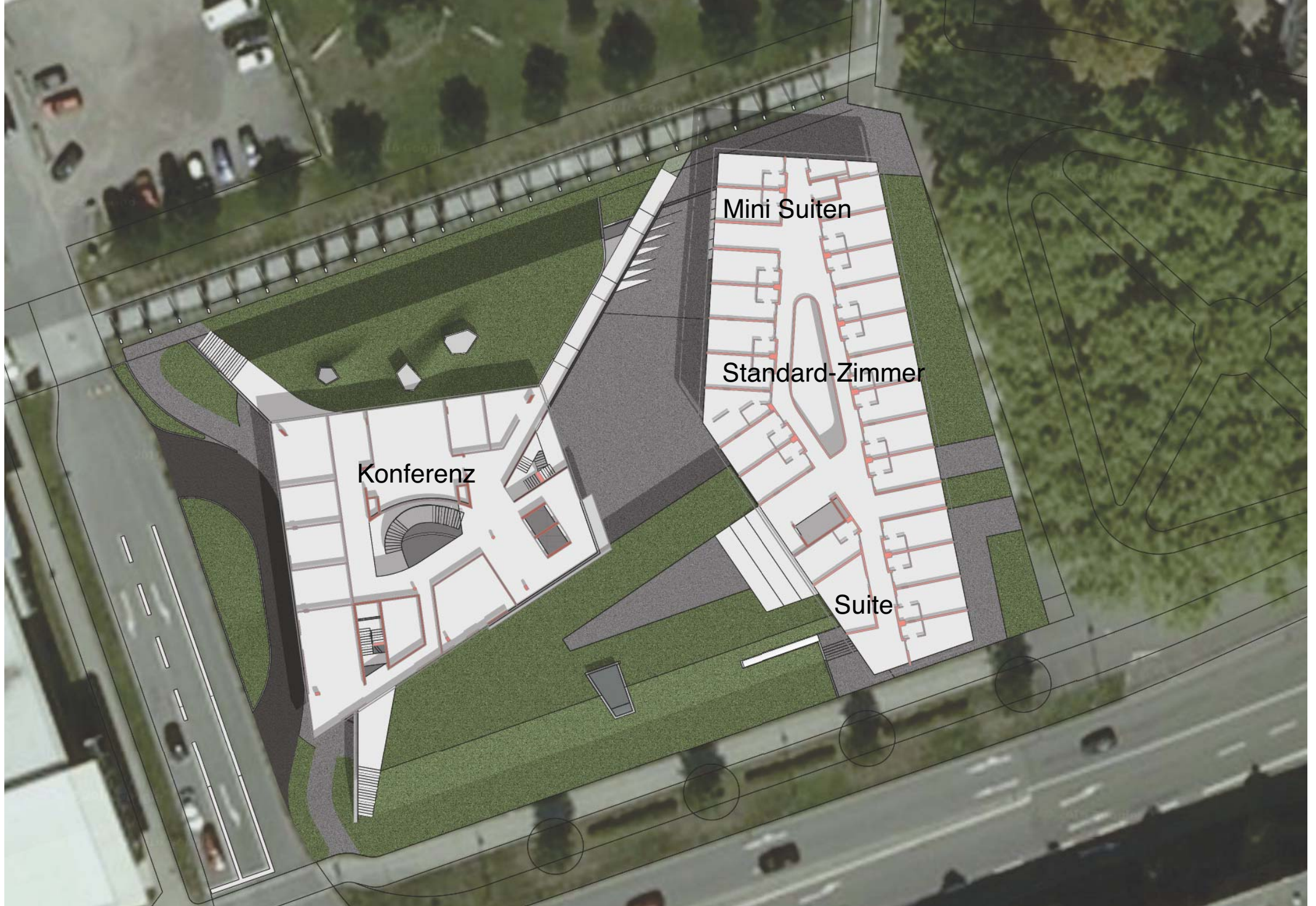
EINFAHRT

Entwurf Hotel

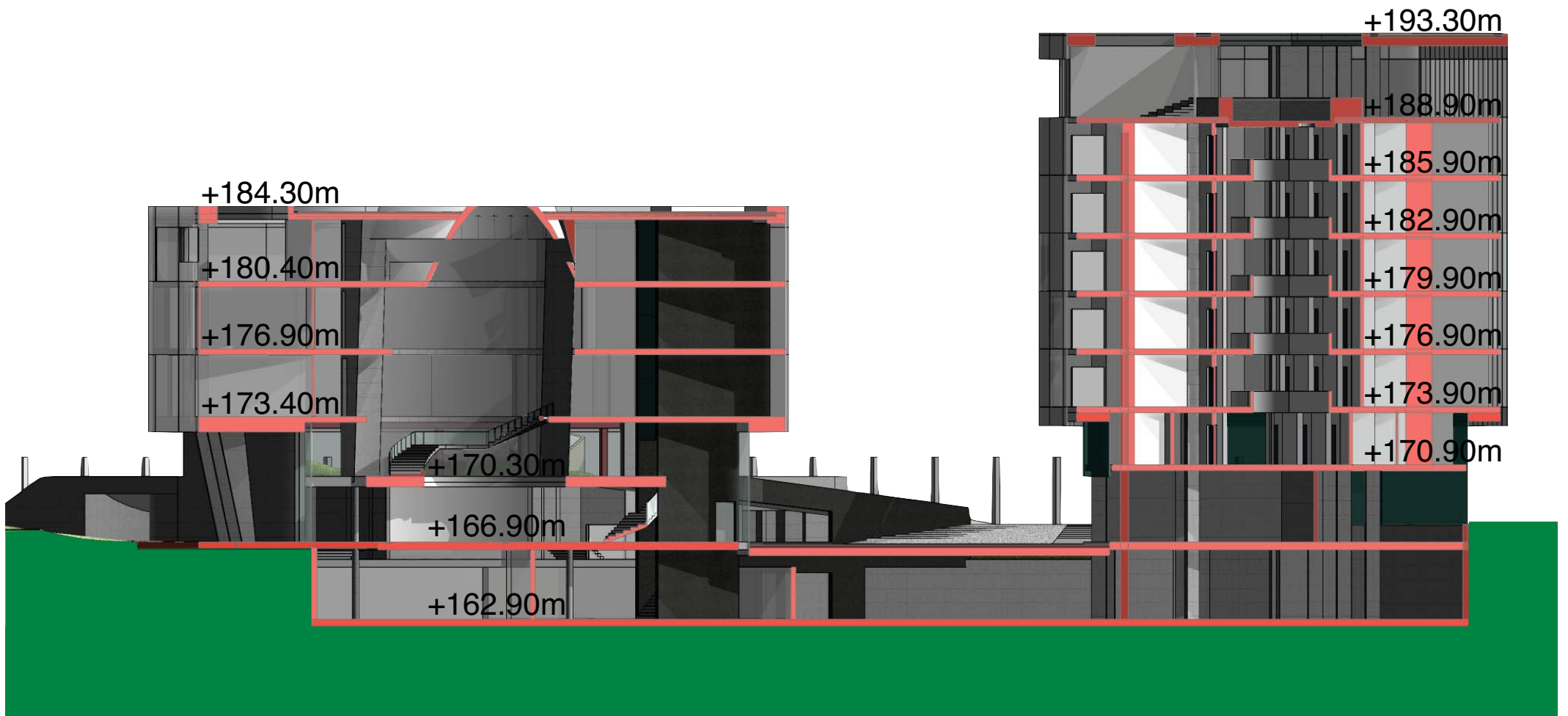


Vergleich: Entwurf - B-Plan

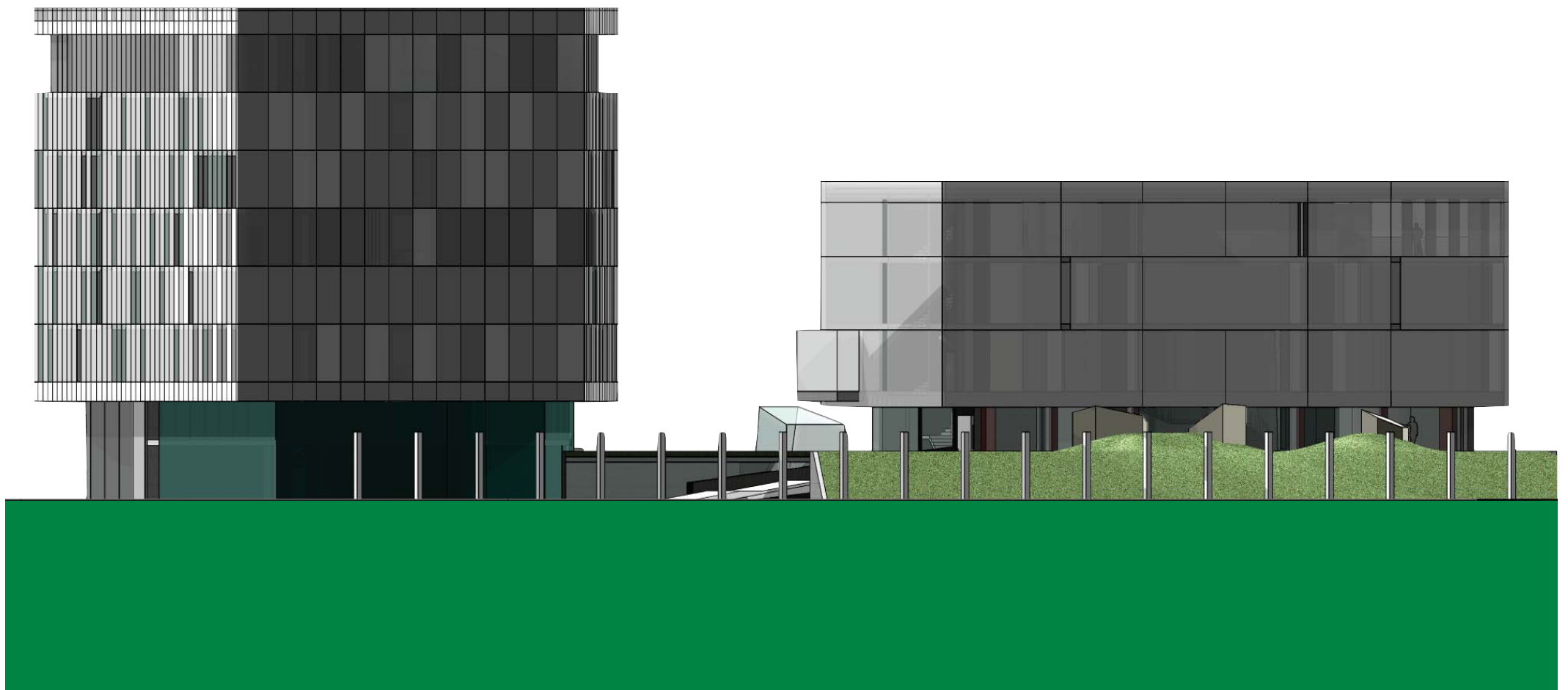




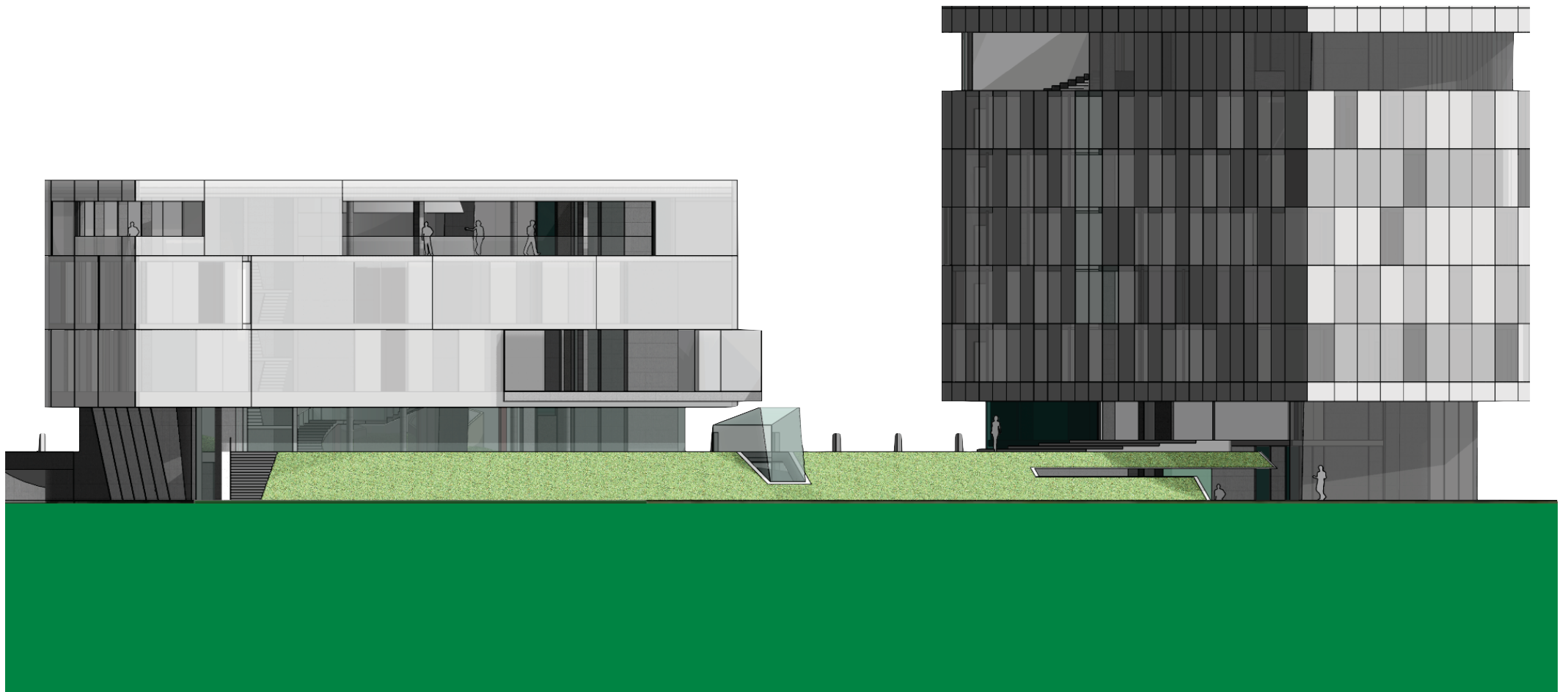
Konferenzebene + Standardgeschoss



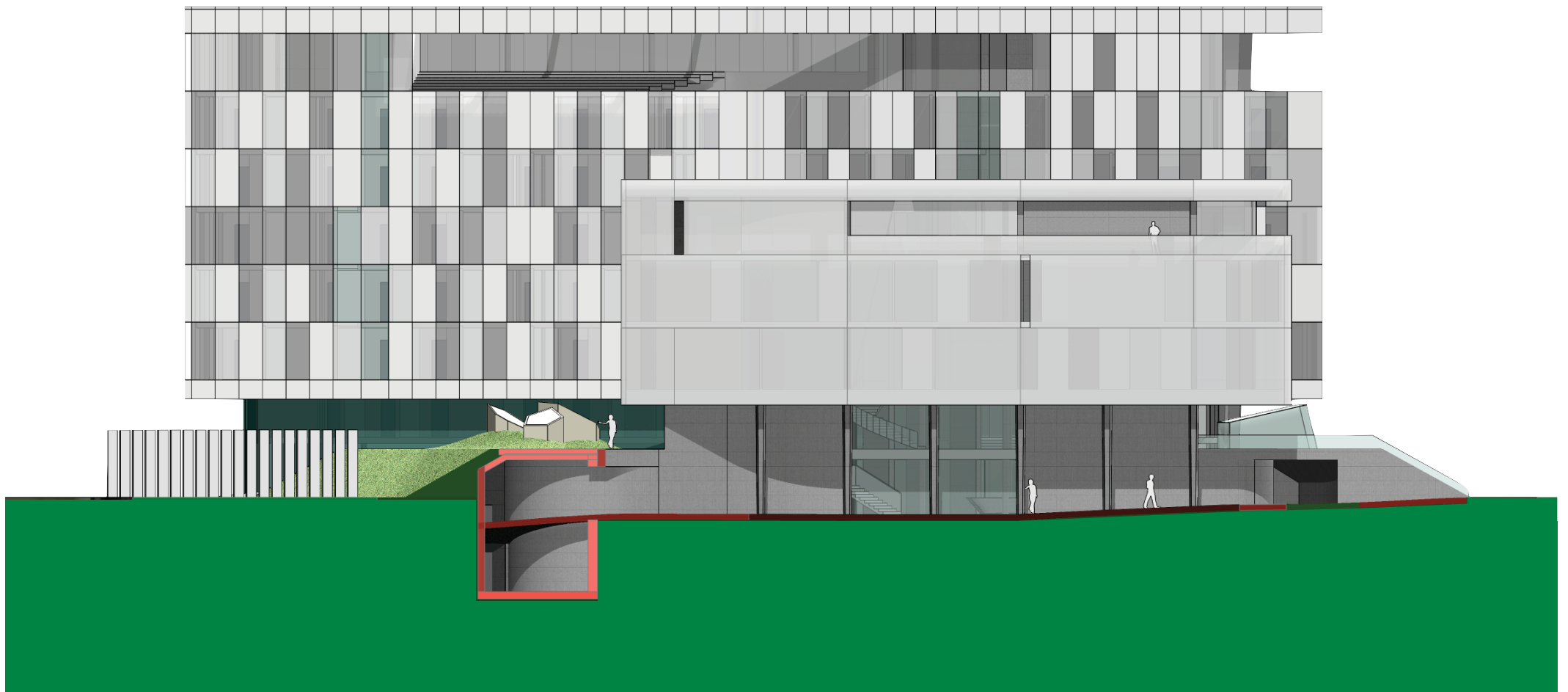
Schnitt Ost-West



Ansicht Nord



Ansicht Süd



Ansicht West